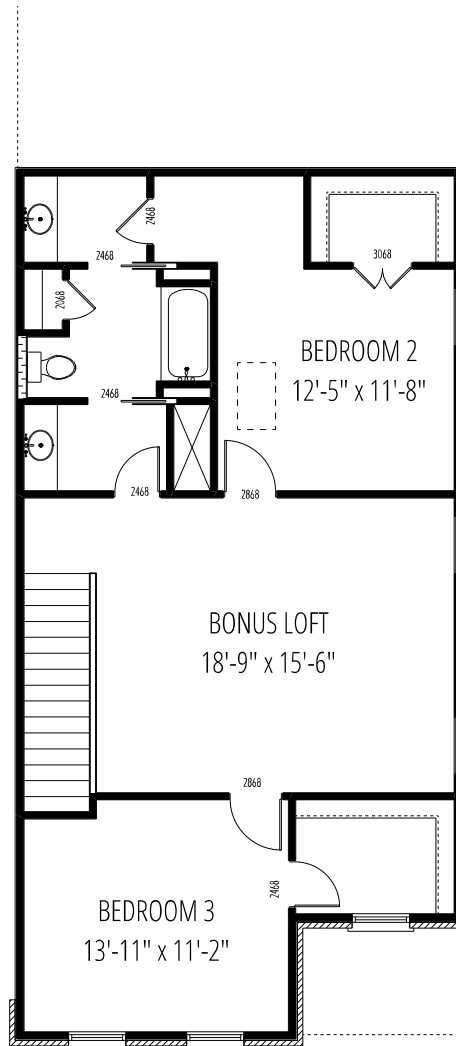
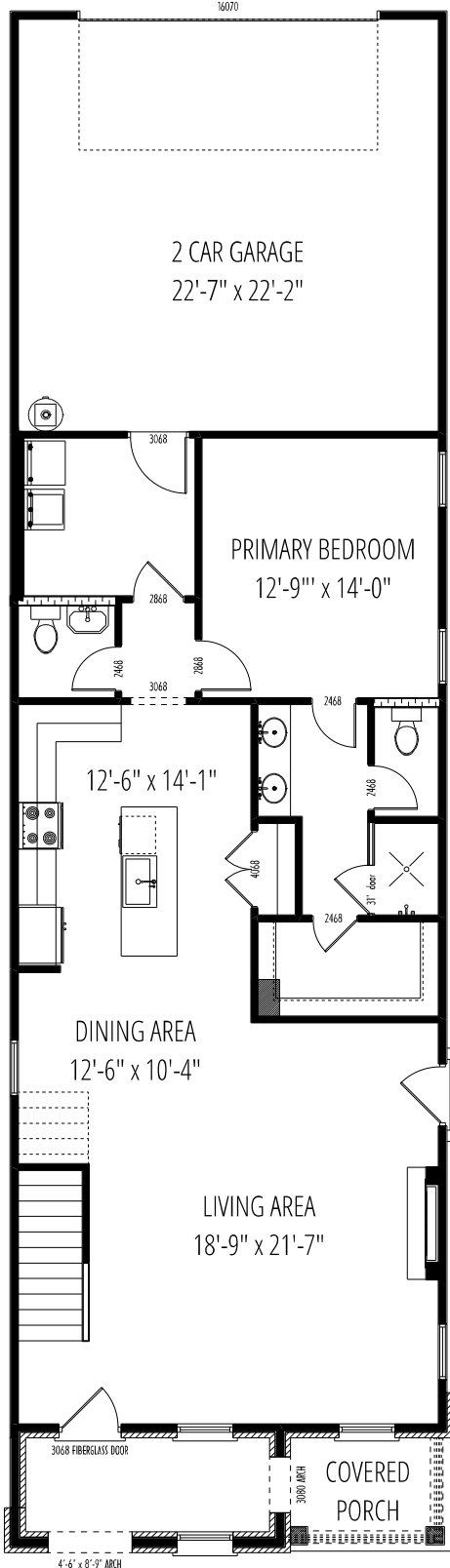


VICTORIA TUDOR

Wembly Park Lot 3



NOTE: front porch rails are optional unless required by local and state codes.



SQUARE FOOTAGE:	
MAIN LEVEL =	1252
UPPER LEVEL =	965
TOTAL HEATED =	2217
GARAGE =	519
FRONT PORCH =	138

NOTE: SOME FEATURES SHOWN ABOVE ARE OPTIONAL
All dimensions are approximate. Builder reserves the right to make minor changes if necessary to improve the product.